

INDUX

CALZADO

INDUX



Índice

Ojillos	4
Ojillos de Lona	11
Argollas	13
Medias Argollas	16
Eslabones	18
Agujeteros de Zamak	20
Grapas y Punta de Agujeta	21
Ganchos y Triángulos Mineros	22
Estoperoles	26
Adornos para Calzado	30
Botones y Remaches	31
Botones de Costura	32
Placas de Zamak	32
Picos de Zamak	33
Broches de Presión	36
Remaches Rápidos	40
Remaches Rápidos Doble Vista	42
Remaches Rápidos Bombón	43
Remaches Rápidos Bombón Doble Vista	44
Remaches Rápidos Cabeza Conica	45
Remaches Bifurcados	47
Remaches Semitubulares	48
Refuerzo para Tacón	49
Remaches para Tacón	52
Alma para Refuerzo de Tacón	55
Postes de Aluminio	56
Hebillas	58
Tabla de Acabados	68
Guía de Aplicaciones	70
Guía de Colores	72

Ojillos

2.0 x 3.0
OA-02030

2.0 x 4.0
OA-02040

2.5 x 4.0
OA-02540

2.0 x 5.0
OA-02050

2.0 x 6.0
OA-02060

2.5 x 6.0
OA-02560

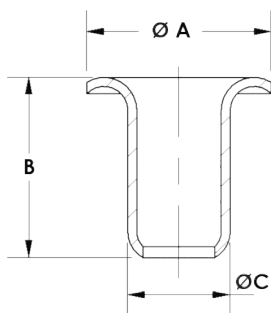


3.8 x 3.8 Plano
ZA-03838

2.3 x 7.0
ZA-02370



Unidad: mm



Escala 1:1

DESCRIPCIÓN	Ø A	B	Ø C
2.0 X 3.0	3.5	2.8	2.0
2.0 X 4.0	3.5	4.0	2.0
2.0 X 5.0	3.5	5.0	2.0
2.0 X 6.0	3.5	6.0	2.0
2.3 X 7.0	4.5	4.8	2.3
2.5 X 4.0	4.5	4.0	2.5
2.5 X 6.0	4.5	6.0	2.5
3.8 X 3.8	6.15	3.8	3.8



Ojillos



3.0 x 3.3
OA-03010

3.0 x 4.0
OA-03020

3.0 x 5.0
OA-03030

3.0 x 6.0
OA-03040

3.0 x 7.2
OA-03050

3.0 x 8.0
OA-03060



3.0 x 9.0
OA-03070

3.0 x 10.0
OA-03080

3.0 x 11.0
OA-03090

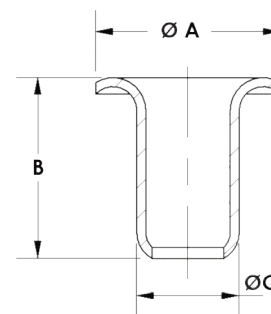
3.0 x 12.0
OA-03095

3.0 x 13.4
OA-03013



Escala 1:1

Unidad: mm



DESCRIPCIÓN	ØA	B	ØC
3.0 x 3.3	5.3	3.5	3.0
3.0 x 4.0	5.3	4.0	3.0
3.0 x 5.0	5.3	5.0	3.0
3.0 x 6.0	5.3	6.0	3.0
3.0 x 7.2	5.3	7.2	3.0
3.0 x 8.0	5.3	8.0	3.0
3.0 x 10.0	5.3	10.0	3.0
3.0 x 11.0	5.3	10.7	3.0
3.0 x 12.0	5.3	12.3	3.0
3.0 x 9.0	5.3	9.0	3.0
3.0 x 13.40	5.3	13.4	3.0

Ojillos

Ojillo K3

Normal
OA-04451

Figura flor Abultada
ZA-04444

Hexagonal
ZA-04451

Con Chaflán
ZA-04453

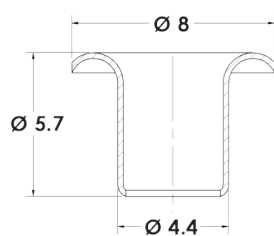


Cabeza Rayada
ZA-04452

Figura Corazón
ZA-04640F021

Figura Flor
ZA-04640F003

Arandela
ZA-0460050



Unidad: mm

Escala 1:1





Ojillo K19

Normal
OA-05856

Cabeza Rayada
ZA-05852

Con chaflán grabado
ZA-05854

Plano (Grabado/Sin Grabar)
ZA-05856

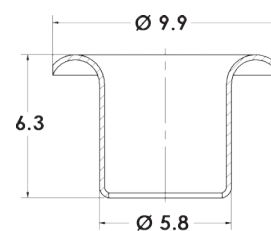


Barrenado
ZA-05856-BR

Hexagonal
ZA-05857-AB

Hexagonal con Estrella
ZA-05858

Arandela
ZA-0600050



Unidad: mm

Escala 1:1



Ojillos

Ojillo K19 Figuras

Dos Anillos
ZA-05869

Bombado
ZA-05870

Fig. Estrella
ZA-05863F001



Fig. Corazón
ZA-05863F002

Fig. Trébol
ZA-05863F003

Fig. Gota
ZA-05863F004

Fig. Elipse
ZA-05863F005



Escala 1:1





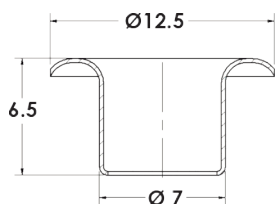
Ojillo K20

Barrenado
ZA-07050

Chafan Grabado
ZA-07051

Normal
OA-07052

Arandela
ZA-07307



Unidad: mm



K-125 Jgo.
ZA-07052J



Escala 1:1



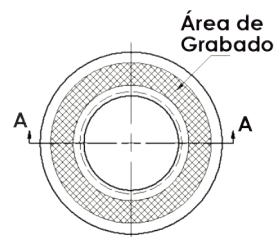
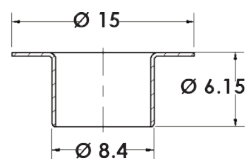
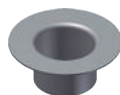
Ojillos

Ojillo K145

K-145
ZA-08447J

K-145 US
ZA-08447J-US

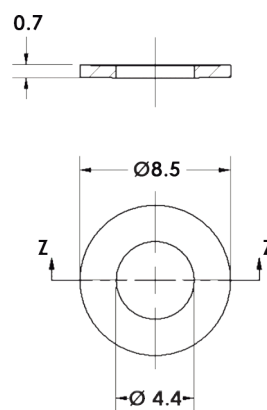
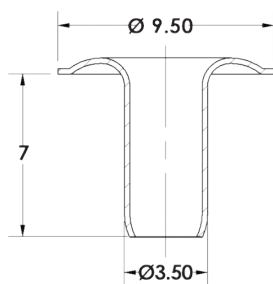
K-145 Grabado
ZA-08447



POSTE 70

OA-03570N

ZA-05507



Unidad: mm

Escala 1:1

Ojillos de Lona



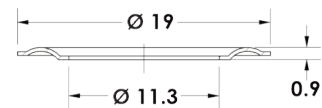
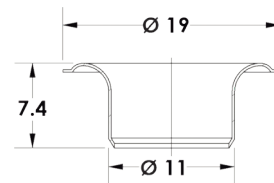
Jgo. Lona 1
ZA-11066J



Jgo. Lona 1 Grabada
ZA-11066



Jgo. Lona Margarita
ZA-11071J

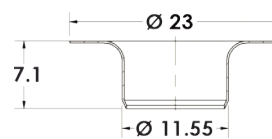
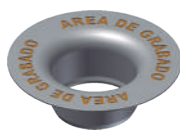


Unidad: mm

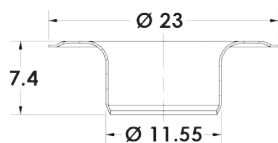
Escala 1:1

Ojillos de Lona

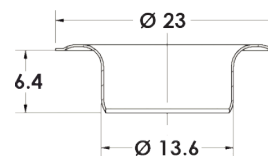
Jgo. Lona 3 Grabada
ZA-11764



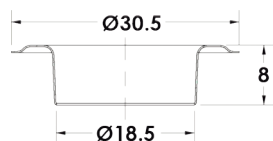
Jgo. Lona 3
ZA-11764



Jgo. Lona 3 Modificada
ZA-1360640



Jgo. Lona 5 Con o Sin Grabar
ZA-1900720



Unidad: mm

Escala 1:1





ARG 8



ARG 10



ARG 13



ARG 16



ARG 19



ARG 22



ARG 25



ARG 32



Escala 1:1

ARG 38

ARG 44

ARG 51



Escala 1:1



Argolla Sin Soldar

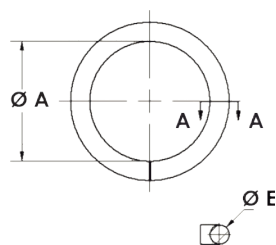
Argolla Soldada

Argolla Soldada Reforzada

CLAVE	Ø A	Ø E
ARG-08S/SOLD	8.00	2.11
ARG-10S/SOLD	10.00	2.11
ARG-13S/SOLD	13.00	2.11
ARG-016S/SOLD	16.00	2.77
ARG-19S/SOLD	19.00	3.05
ARG-22S/SOLD		3.40
ARG-25S/SOLD	25.00	3.40
ARG-26S/SOLD	26.00	3.40
ARG-32S/SOLD	32.00	3.76
ARG-38S/SOLD	38.00	4.19
ARG-44S/SOLD	44.00	4.57
ARG-51S/SOLD	51.00	5.16

CLAVE	Ø A	Ø E
ARG-25C/SOLD	25.00	3.40
ARG-26C/SOLD	26.00	3.40
ARG-32C/SOLD	32.00	3.76
ARG-38C/SOLD	38.00	4.19
ARG-44C/SOLD	44.00	4.57
ARG-51C/SOLD	51.00	5.16

CLAVE	Ø A	Ø E
ARG-25C/SOLDR	25.00	4.19
ARG-26C/SOLDR	26.00	5.16
ARG-32C/SOLDR	32.00	5.16
ARG-38C/SOLDR	38.50	5.16
ARG-44C/SOLDR	44.50	6.04



Unidad: mm



Medias Argollas

ARG 8

ARG 10

ARG 13

ARG 16

ARG 19



ARG 22

ARG 25

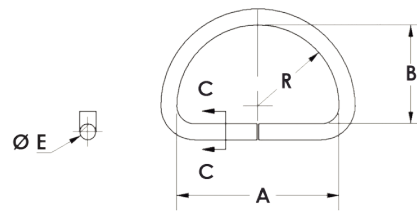
ARG 32

ARG38



Escala 1:1





Unidad: mm

Media Argolla Sin Soldar

CLAVE	Alambre E	A	B	(R)
MAR-8S/SOLD-	1.47	8.00	4.60	4.00
MAR-10S/SOLD-	1.67	9.70	6.30	4.85
MAR-13S/SOLD-	2.11	15.00	9.50	7.50
MAR-16S/SOLD-	2.30	17.50	11.40	8.75
MAR-19S/SOLD-	2.41	21.00	12.70	10.50
MAR-22S/SOLD-	3.05	23.00	15.00	11.50
MAR-25S/SOLD-	3.05	26.00	16.40	13.00
MAR-32S/SOLD-	3.40	34.50	21.00	17.25
MAR-38S/SOLD-	4.19	39.00	22.50	19.50

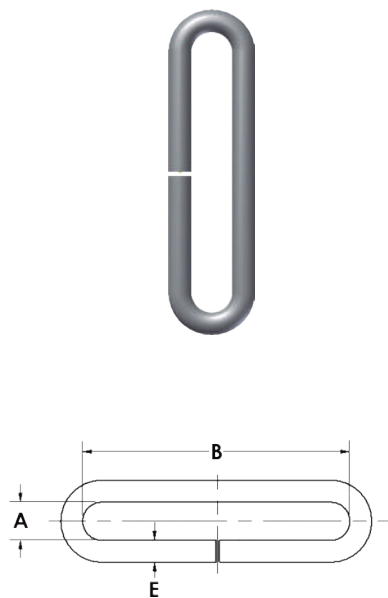
Media Argolla Sin Soldar Reforzada

CLAVE	ALAMBRE E	A	B	(R)
MAR-22S/SOLDZ	4.19	22.40	18.65	11.20
MAR-25S/SOLDZ	5.16	27.50	23.65	13.70
MAR-32S/SOLDZ	5.16	33.00	28.00	16.00
MAR-38S/SOLDZ	5.59	40.00	35.00	20.00

Media Argolla Soldada Reforzada

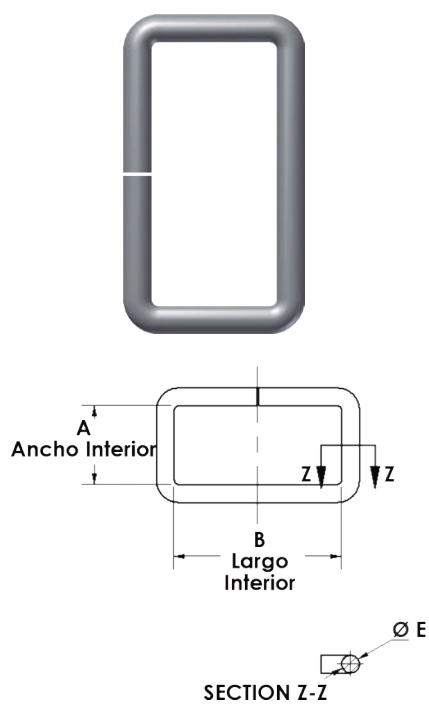
CLAVE	ALAMBRE E	A	B	(R)
MAR-22C/SOLDZ	4.19	22.40	18.65	11.20
MAR-25C/SOLDZ	5.16	27.50	23.65	13.70
MAR-32C/SOLDZ	5.16	33.00	28.00	16.00
MAR-38C/SOLDZ	5.59	40.00	35.00	20.00

Eslabón Ovalado



CLAVE	Ø E	B	A
PCI-13S/SOLD-	2.05	13.8	4.00
PCI-16S/SOLD-	2.05	16.00	6.00
PCI-19S/SOLD-	2.30	19.50	7.00
PCI-25S/SOLD-	2.30	25.20	7.40
PCI-29S/SOLD-	4.19	29.50	15.00
PCI-31S/SOLD	2.77	31.60	9.60
PCI-32S/SOLD-	2.30	32.30	8.60
PCI-35S/SOLD	2.77	35.10	8.60
PCI-39S/SOLD-	4.19	39.00	15.00
PCI-40S/SOLD-	3.05	40.40	8.40
PCI-22S/SOLD-	2.77	22.60	8.40
PCI-23S/SOLD-	2.05	23.00	5.50

Eslabón Rectangular



CLAVE	Ø E	B	A
PCC-13S/SOLD-	2.05	13.3	6.30
PCC-16S/SOLD-	2.11	17.00	8.30
PCC-19S/SOLD-	2.11	21.10	8.30
PCC-25S/SOLD-	2.30	26.50	8.80
PCC-32S/SOLD-	2.30	32.50	9.00
PCC-38S/SOLD-	3.05	38.50	12.10
PCC-40S/SOLD-	3.05	40.00	8.70
PCC-030-	4.19	21.00	17.30
PCC-040-C/S-	6.04	39.00	35.40

Unidad: mm





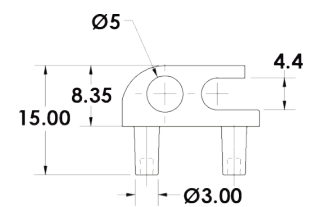
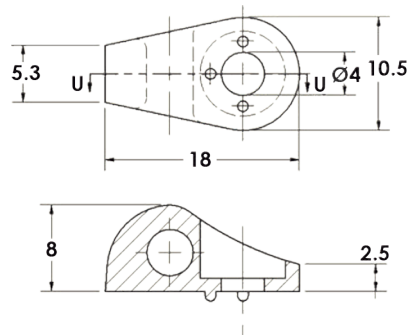
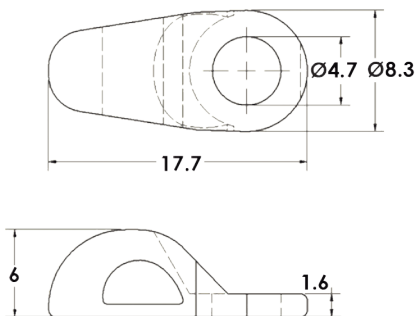
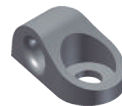
Agujeteros de Zamak

Agujetero Zamak Nº 12
AGZ-N012

Agujetero Zamak Nº 14 Jgo.
AGZJ-N014

Agujetero Zamak Nº 14
AGZ-N014

Agujetero Zamak Nº 16
AGZ-N016

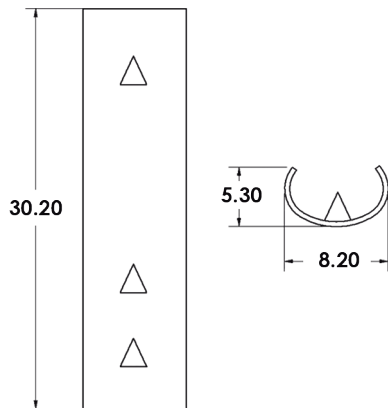


Unidad: mm

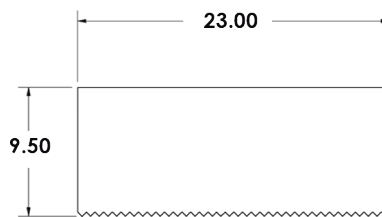
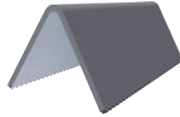
Escala 1:1

Grapas y Punta de Agujeta

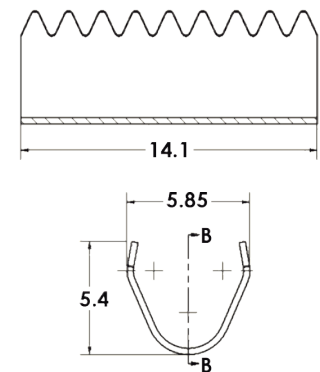
Puntero de Agujeta de Acero
AA02XXXX-XX



Grapa de Acero
AA01XXX-XX

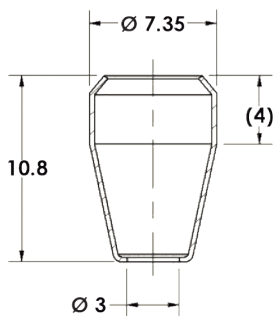


Grapa Textil
GA-GRAPA-PJ



Nota: La grapa puede ir grabada por ambos con el mismo diseño o diferente lados

Bellota
ZA-07311



Unidad: mm



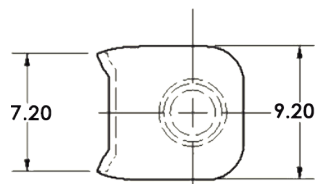
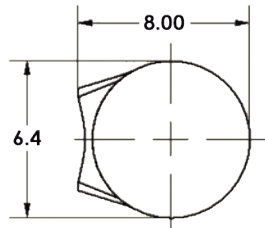
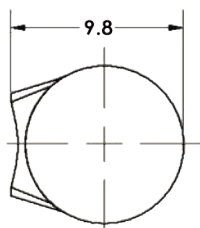
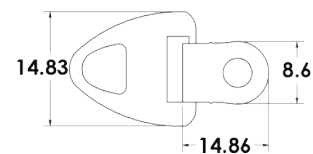
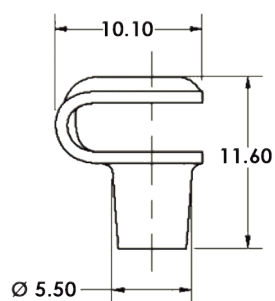
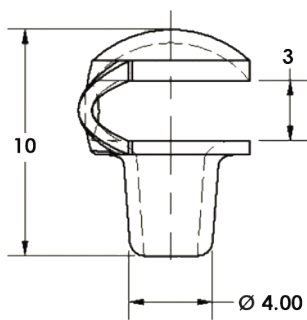
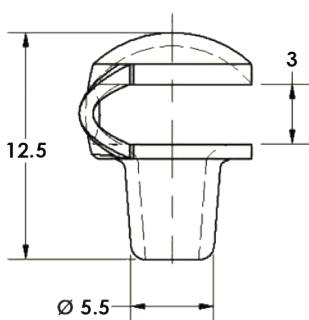
Ganchos y Triángulos Mineros

Gancho G-19
GA-G19N

Gancho G-3
GA-G0300

Gancho G-19 Cuadrado
GA-G19CUA

Gancho Zamak T-42
ZGZ-T42



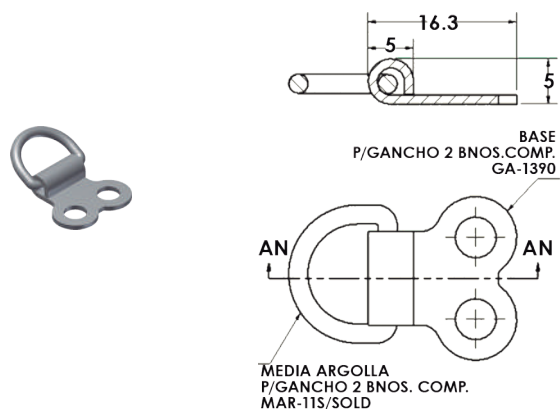
Unidad: mm

Escala 1:1

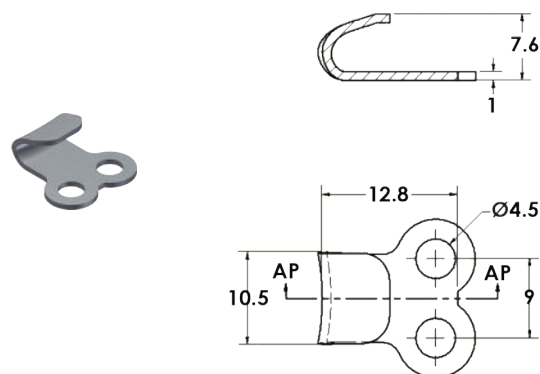


Ganchos y Triángulos Mineros

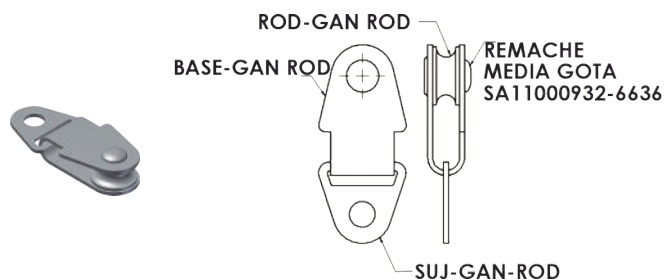
Gancho Minero
2 Barrenos Compuesto
GA-1390E



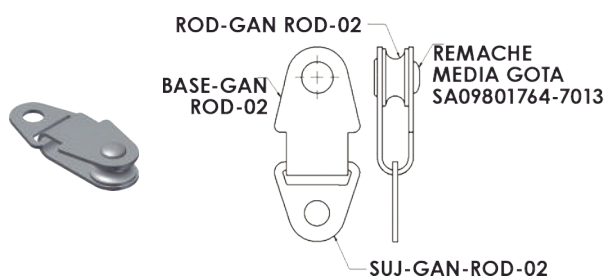
Gancho Minero
2 Barrenos
GA-1360



Gancho con Rodillo Grande
ZRA-01



Gancho con Rodillo Chico
ZRA-02



Unidad: mm

Escala 1:1

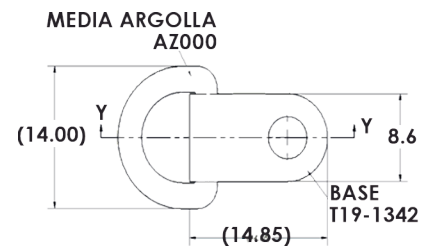
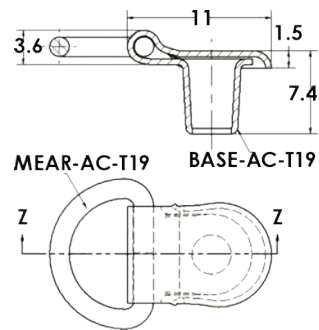
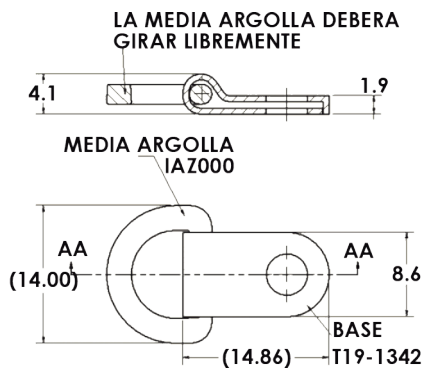


Ganchos y Triángulos Mineros

T-19 Plano
IA-T19-1342

Triángulo T-19
IA-T190R

Gancho Minero de Zamak
IA-T19-Z00



Escala 1:1

Unidad: mm



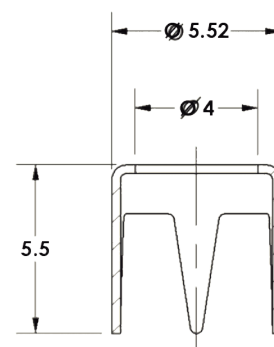
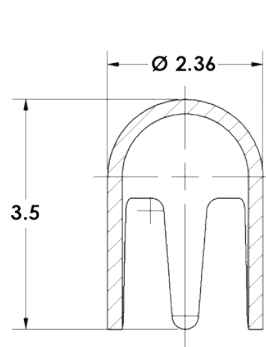


Estoperoles



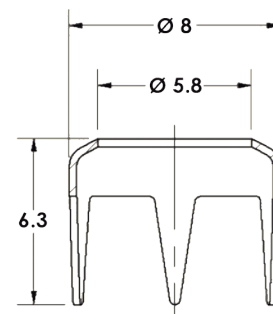
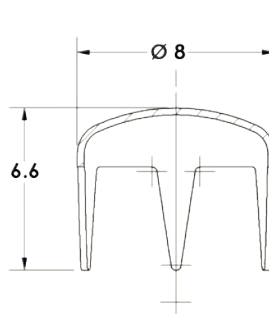
Bola 4 patas
ZA-04079E026

Bola perforada 4 patas
ZA-04079E018



Bola 5 Patas
ZA-04079E021

Bola Perforada 8
ZA-04079E019

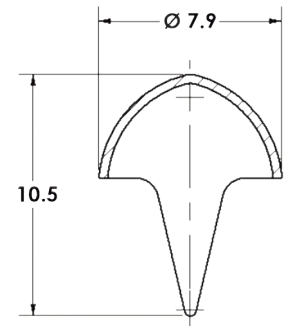
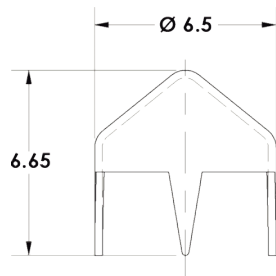


Unidad: mm

Escala 1:1

Cónico 6.50 (4 patas)
ZA-04079E034

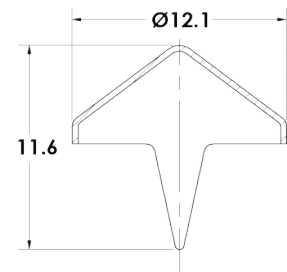
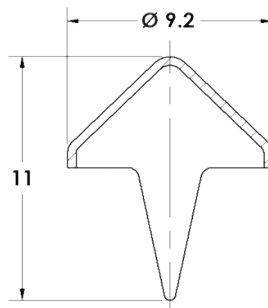
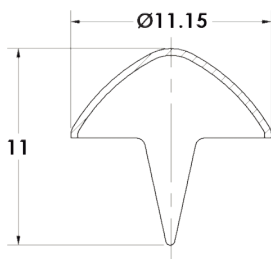
Cónico 7.09 (2 patas)
ZA-04079E033



Cónico 11.53 (2 patas)
ZA-04079E031

Cónico 9.27 (2 patas)
ZA-04079E032

Cónico 12.12 (2 patas)
ZA-04079E030



Unidad: mm

Escala 1:1



Estoperoles

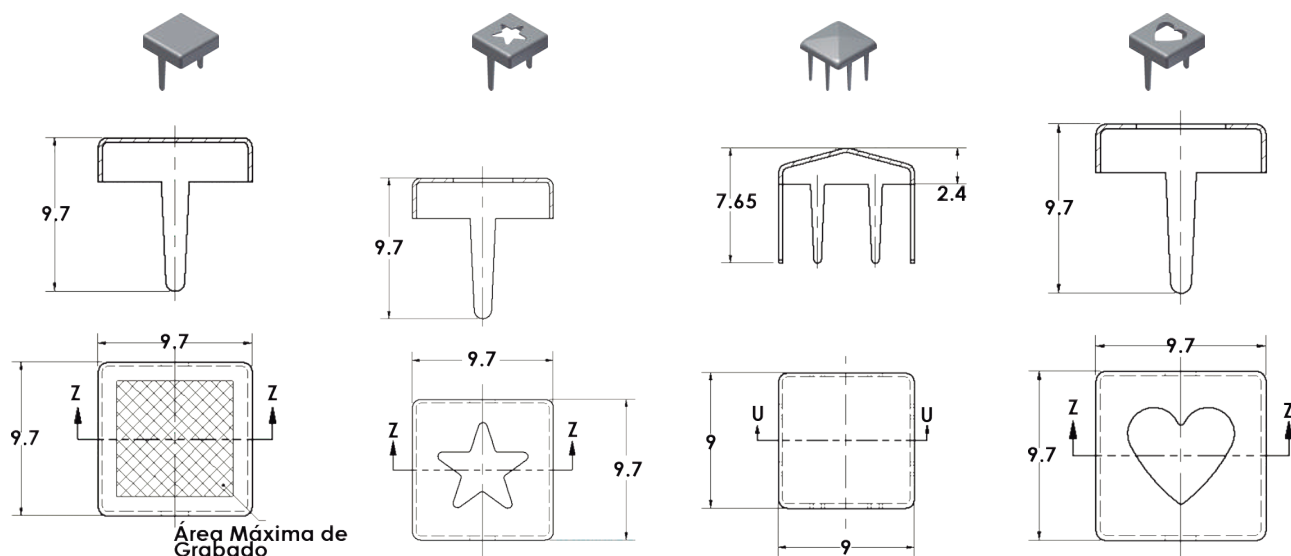


Pirámide Cuadrada (2 patas)
ZA-03047E009

Pirámide Estrella
ZA-03047E703

Pirámide Cuadrada (8 patas)
ZA-03047E006

Pirámide Corazón
ZA-03047E702



Área Máxima de Grabado

Escala 1:1

Unidad: mm



Adornos para Calzado y Textil

Nelly 10.0 mm



Frida 10.0 mm



Alette 10.0 mm



Alexa 10.5 mm



Misha 10.5 mm



Gaby 10.5 mm



Laurent 10.5 mm



Abel 10.5 mm



Rose 10.5 mm



Colyn 10.5 mm



Caroline 11.0 mm



Kesha 12.0 mm



Liza 12.0 mm



Tesa 12.5 mm



Enzo 12.5 mm



Emma 12.5 mm



Estrella 12.5 mm



Win 14.00 mm



Sofia 14.5 mm



Angie 15.00mm



Escala 1:1

Botones y Remaches

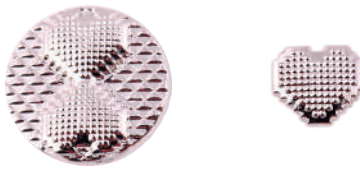
Naturx



Ciber



Pixel Heart



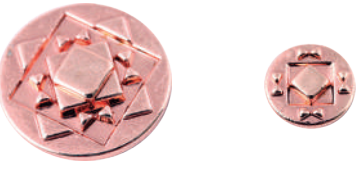
Energy



Mosaik



Artesanal



Cosmos



Remolino



Secuencial



Nota: La medida de todos los botones es de 21 mm y la medida de todos los remaches es de 12 mm

Escala 1:1





Botones de Costura



Placas de Zamak, Postes y Jaladeras



Los productos de Zamak pueden ir personalizados en tamaño, figura, letra y texto. Consulte con su Representante de Ventas Indux.

Picos de Zamak



Pico de Zamak N°1
AZ060003

Pico de Zamak N°2
AZ060008

Pico de Zamak N°3
AZ060004

Pico de Zamak N°4
AZ060005

Pico de Zamak N°5
AZ060006



Escala 1:1





Picos de Zamak

Pico de Zamak N°6
AZ060011

Pico de Zamak Piramide
AZ060009

Pico de Zamak Piramide
Z3-0032

Pico de Zamak Esfera
AZ060010



CLAVE	DESCRIPCIÓN
AZ060003	PICO ZAMAK # 1 ALTURA 12.5 MM Ø 12 MM
AZ060008	PICO ZAMAK # 2 ALTURA 7 MM Ø 5 MM
AZ060004	PICO ZAMAK # 3 ALTURA 17.5 MM Ø 9.5 MM
AZ060005	PICO ZAMAK # 4 ALTURA 10 MM Ø 7.5 MM
AZ060006	PICO ZAMAK # 5 ALTURA 14 MM Ø 8 MM
AZ060011	PICO ZAMAK # 6 ALTURA 4 MM Ø 6 MM
AZ060009	PICO ZAMAK PIRAMIDE ALTURA 10 MM MEDIDA 7X7 MM
AZ060010	PICO ESFERA ALTURA 3MM Ø 5 MM

Remche 3785
ZA-3785H



Escala 1:1

Nota: *Todos Los Picos se aplican con el Remache 3785. Altura 2.8 mm y Diametro 9.5 mm

*La altura de todos los postes es de 5 mm y el diámetro es de 2.5 mm, cualquier modificación favor de dirigirse con su representante de ventas.



Broches de Presión

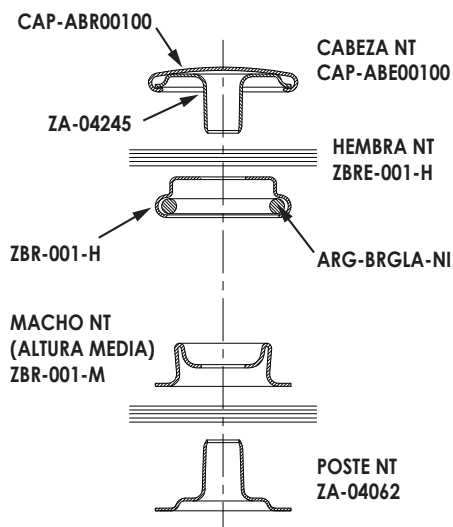
NT-24
(CA010000)

Cabeza

Hembra

Macho

Poste



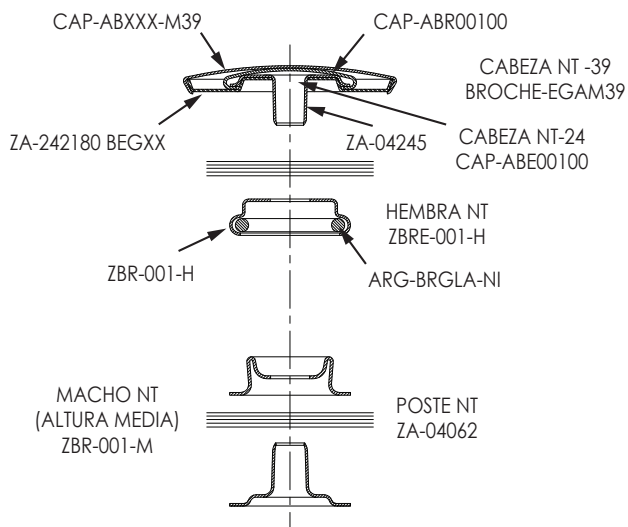
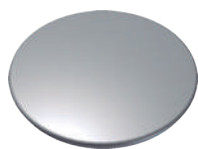
NT-39
(CA040000)

Cabeza

Hembra

Macho

Poste



Escala 1:1



Broches de Presión

TX-19
(CA030000)

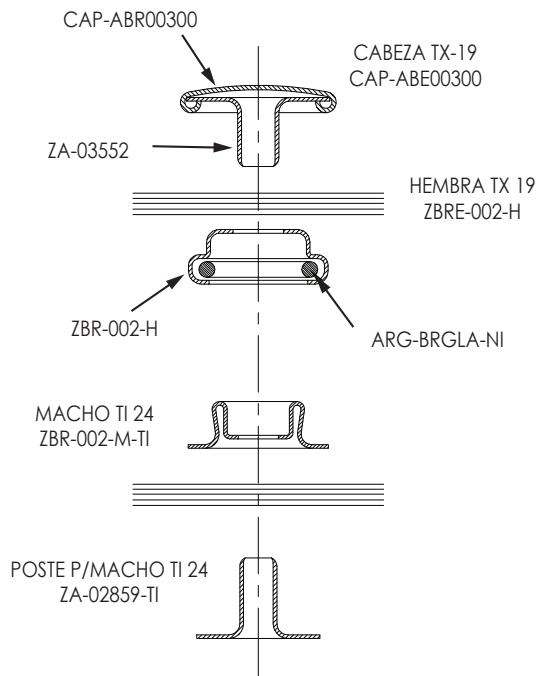
Cabeza

Hembra



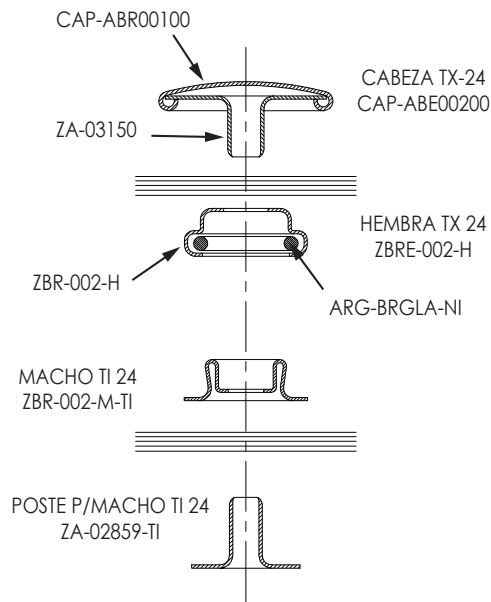
Macho

Poste



Escala 1:1

TX-24 (CA020000)



Cabeza

Hembra

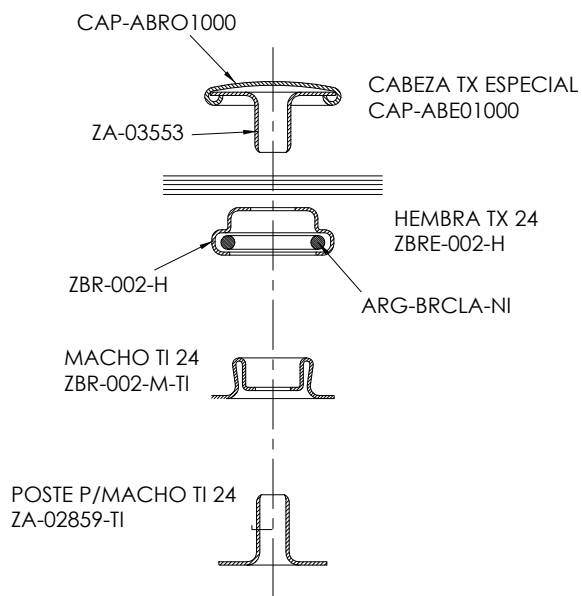


Macho

Poste



TX-Especial (CA100000)



Cabeza

Hembra



Macho

Poste



Escala 1:1

Remaches Rápidos

00
RA-0000J

0
RA-0008J

33
RA-3308J

33.5
RA-3358J

34
RA-3408J



Escala 1:1



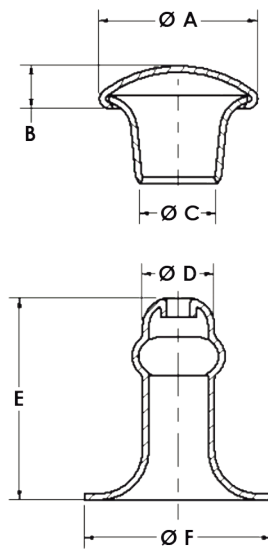
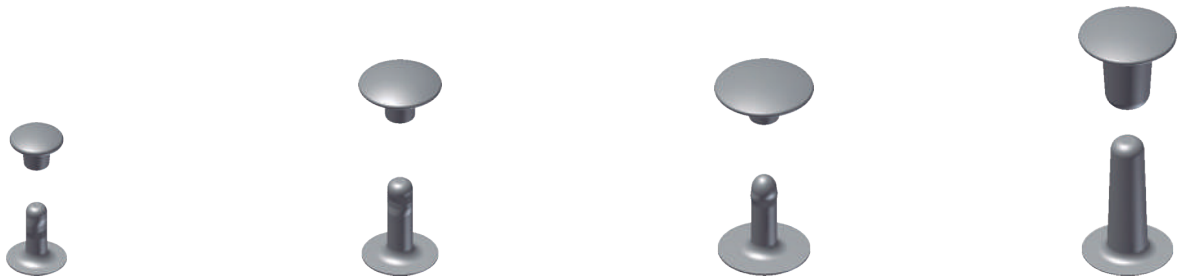
Remaches Rápidos

34.5
RA-3458J

36
RA-3608J

37
RA-3708J

41
RA-4108J



Unidad: mm

Escala 1:1

CLAVE	A	B	C	D	E	F
RA-0000J	Ø 4.84	1.45	Ø 2.20	Ø 2.05	4.85	Ø 4.70
RA-0006J	Ø 5.50	1.50	Ø 2.65	Ø 2.50	7.00	Ø 4.50
RA-3306J	Ø 7.00	1.80	Ø 3.05	Ø 2.90	8.00	Ø 8.50
RA-3358J	Ø 7.00	1.80	Ø 3.05	Ø 2.90	9.00	Ø 8.50
RA-3408J	Ø 9.00	2.00	Ø 3.05	Ø 2.90	8.00	Ø 8.50
RA-3458J	Ø 9.00	2.00	Ø 3.05	Ø 2.90	9.00	Ø 8.50
RA-3608J	Ø 11.00	2.20	Ø 3.55	Ø 3.40	11.00	Ø 10.20
RA-3708J	Ø 13.00	2.00	Ø 3.55	Ø 3.40	12.00	Ø 12.20
RA-4108J	Ø 13.00	2.00	Ø 4.90	Ø 4.50	18.00	Ø 12.20

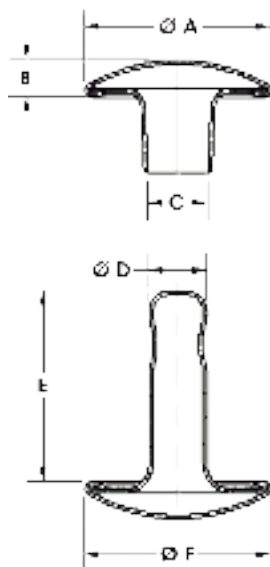
Remaches Rápidos Doble Vista

0 Dos Vistas
ZA-5009J

33 Dos Vistas
RA-5309J

34.5 Dos Vistas
RA-5459J

36 Dos Vistas
RA-5609J



Unidad: mm

Escala 1:1

CLAVE	A	B	C	D	E	F
ZA-5009J	$\varnothing 5.50$	1.50	$\varnothing 2.65$	$\varnothing 2.50$	6.40	$\varnothing 5.50$
RA-5309J	$\varnothing 7.00$	1.80	$\varnothing 3.05$	$\varnothing 2.90$	7.20	$\varnothing 7.00$
RA-5459J	$\varnothing 9.00$	2.00	$\varnothing 3.05$	$\varnothing 2.90$	8.40	$\varnothing 9.00$
RA-5609J	$\varnothing 11.00$	2.20	$\varnothing 3.55$	$\varnothing 3.40$	10.00	$\varnothing 11.00$

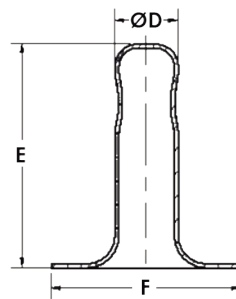
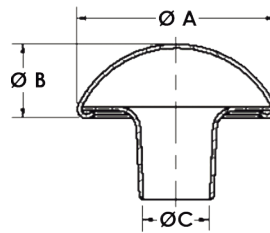
Remaches Rápidos Bombón

0
RRB-0008J

33
RRB-3308J

34.5
RRBS-3452J

36
RRB-3600J



Unidad: mm

Escala 1:1

CLAVE	A	B	C	D	E	F
RRB-0008J	Ø 5.54	Ø 2.00	Ø 2.65	Ø 2.50	7.00	6.50
RRB-3308J	Ø 7.00	Ø 2.60	Ø 3.05	Ø 2.90	8.00	8.30
RRBS-3452J	Ø 9.00	Ø 3.60	Ø 3.05	Ø 2.90	9.00	8.30
RRB-3600J	Ø 11.00	Ø 4.00	Ø 3.55	Ø 3.40	12.00	12.20

Remaches Rápidos Bombón Doble Vista

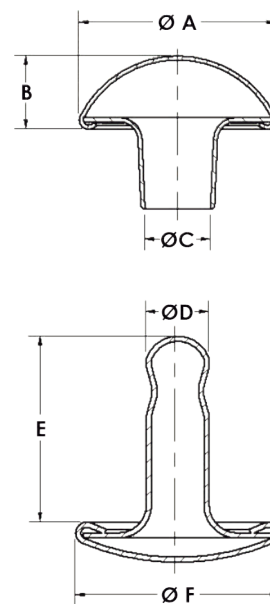
34.5 Dos Vistas, Hem. y Mach. 33
RRB-3451J

34.5 Dos Vistas Hem y Mach 34.5
RRB-3452J



34.5 Dos Vistas
RRB-3453J

36 Dos Vistas
RRB-3609



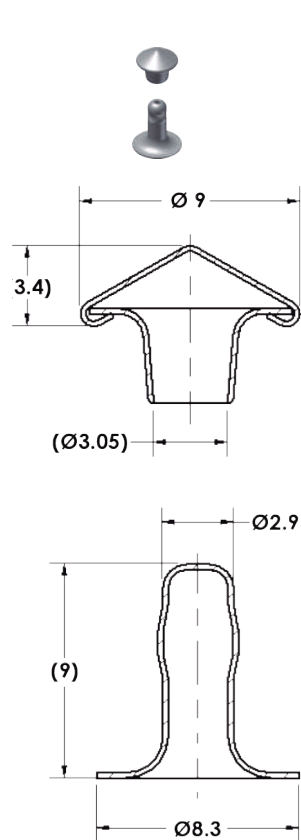
Unidad: mm

Escala 1:1

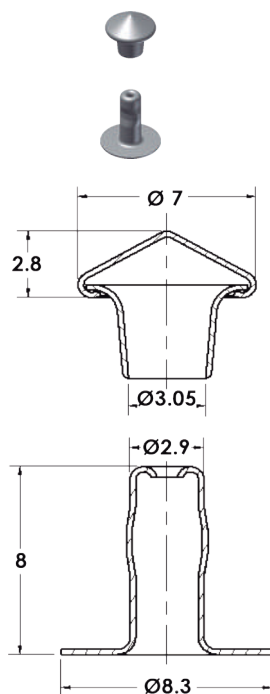
CLAVE	A	B	C	D	E	F
RRB-3451J	Ø 9.00	3.60	Ø 3.05	Ø 2.90	7.30	Ø 9.00
RRB-3452J	Ø 9.00	3.60	Ø 3.05	Ø 2.90	8.20	Ø 9.00
RRB-3453J	Ø 9.00	3.60	Ø 3.55	Ø 3.40	12.00	Ø 8.30
RRB-3609J	Ø 11.00	4.00	Ø 3.55	Ø 3.40	10.00	Ø 11.00

Remaches Rapido Cabeza Conica

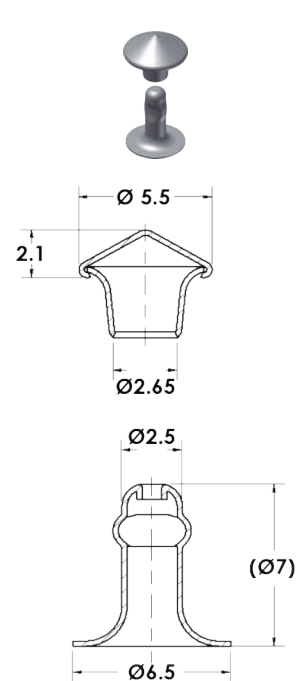
RAC-0008J



RAC-3308J

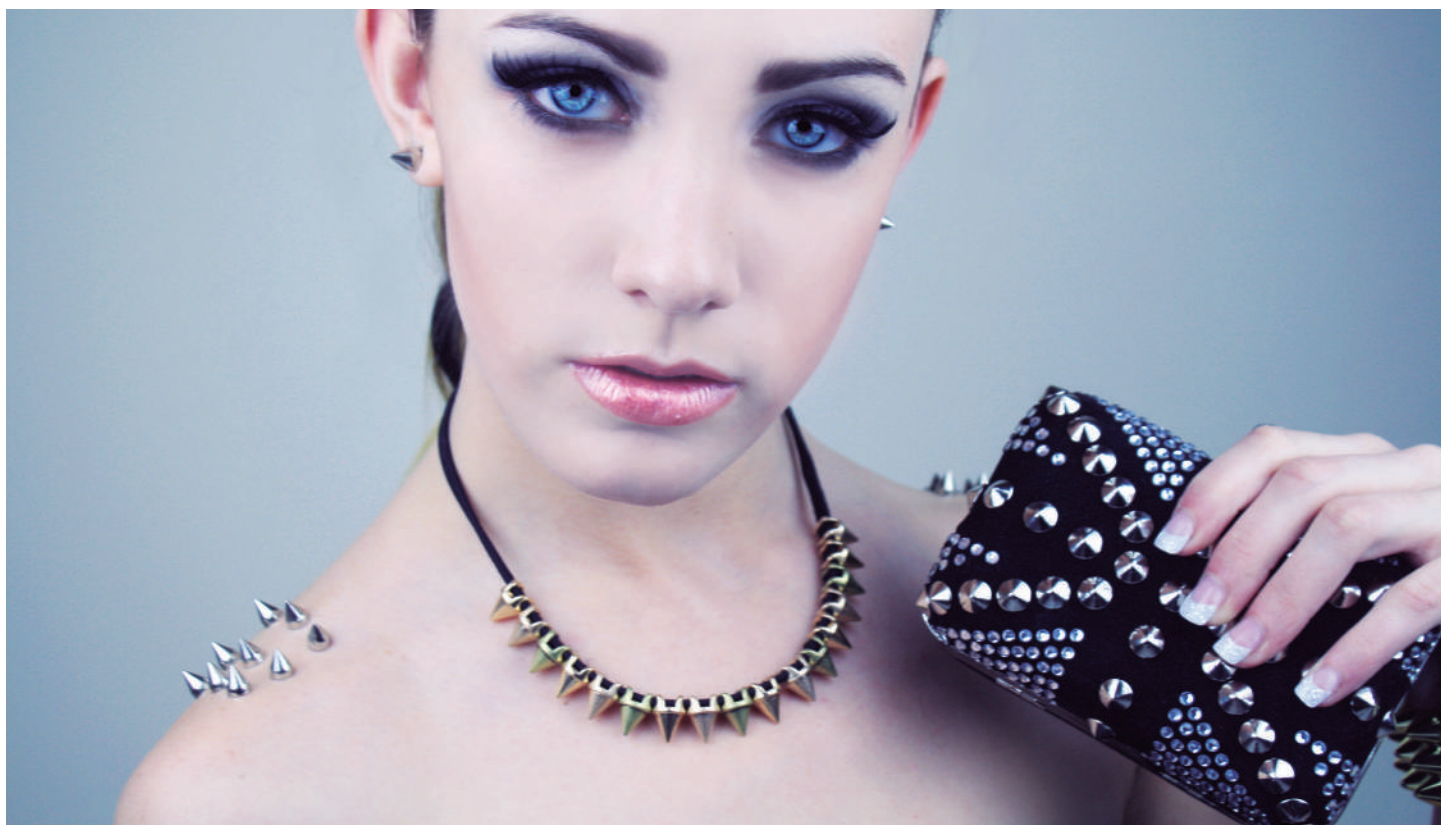


RAC-3458J



Unidad: mm

Escala 1:1





Remaches Bifurcados

BA14000416-2827

BA14000516-2833

BA14000616-2839

BA14000716-2845



BA14000816-2850

BA14000916-2855

BA14001016-2860

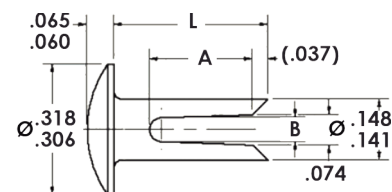
BA14001216-2865



Unidad: Pulg.

Escala 1:1

CLAVE	L	A	B
BA14000416-2827	.250	.154	.060
BA14000516-2833	.312	.217	.060
BA14000616-2839	.375	.250	.058
BA14000716-2845	.437	.250	.058
BA14000816-2850	.500	.312	.054
BA14000916-2855	.562	.312	.054
BA14001016-2860	.625	.312	.054
BA14001216-2865	.750	.312	.054

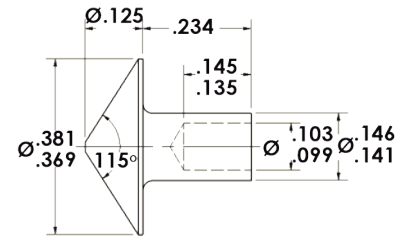
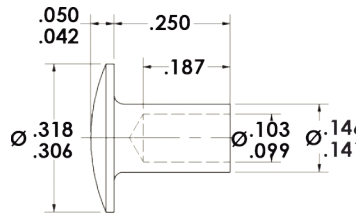
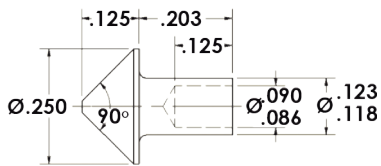


Remaches Semitubulares

Cabeza Conica 1/8 x 13/64
SA12201364-7404

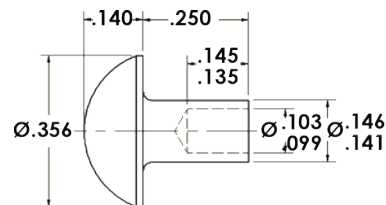
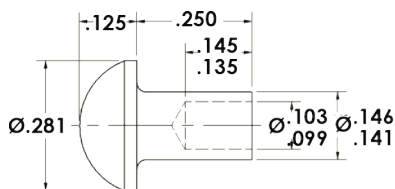
Cabeza Media gota 145 x 4/16
SA14500416-4904

Cabeza Conica 145 x 15/64
SA14500416-7401



Cabeza Gota 145 x 4/16
SA14500416-7683

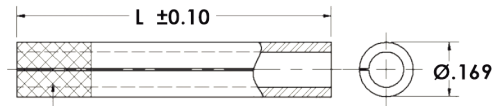
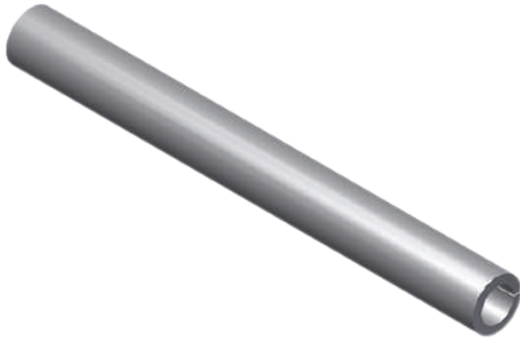
Cabeza Gota Grande 145 x 4/16
SA14500416-7685



Unidad: Pulg.

Escala 1:1

.8 mm



MOLETEADO

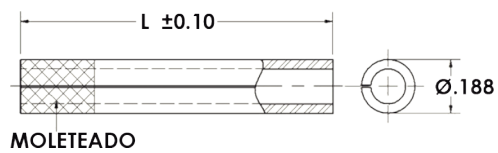
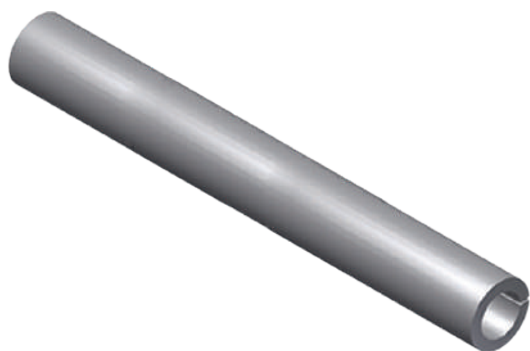
Acabados: Zincado (HBT) y Natural Aceitado (HBK)



CLAVE	No.	L(MM)
0040-0015-HBK	4 X 15	.591
0040-0020-HBK	4 X 20	.787
0040-0025-HBK	4 X 25	.984
0040-0030-HBK	4 X 30	1.181
0040-0035-HBK	4 X 35	1.378
0040-0040-HBK	4 X 40	1.575
0040-0045-HBK	4 X 45	1.771
0040-0050-HBK	4 X 50	1.968
0040-0055-HBK	4 X 55	2.165
0040-0060-HBK	4 X 60	2.362
0040-0065-HBK	4 X 65	2.559
0040-0070-HBK	4 X 70	2.756
0040-0075-HBK	4 X 75	2.953
0040-0080-HBK	4 X 80	3.150
0040-0085-HBK	4 X 85	3.346
0040-0090-HBK	4 X 90	3.543
0040-0095-HBK	4 X 95	3.740
0040-00100-HBK	4 X 100	3.936
0040-00105-HBK	4 X 105	4.133
0040-00110-HBK	4 X 110	4.330
0040-00115-HBK	4 X 115	4.527
0040-00120-HBK	4 X 120	4.724
0040-00125-HBK	4 X 125	4.921

Refuerzo para Tacón

1 mm



CLAVE	No.	L(MM)
0050-0015-HBK	5 X 15	.591
0050-0020-HBK	5 X 20	.787
0050-0025-HBK	5 X 25	.984
0050-0030-HBK	5 X 30	1.181
0050-0035-HBK	5 X 35	1.378
0050-0040-HBK	5 X 40	1.575
0050-0045-HBK	5 X 45	1.771
0050-0050-HBK	5 X 50	1.968
0050-0055-HBK	5 X 55	2.165
0050-0060-HBK	5 X 60	2.362
0050-0065-HBK	5 X 65	2.559
0050-0070-HBK	5 X 70	2.756
0050-0075-HBK	5 X 75	2.953
0050-0080-HBK	5 X 80	3.150
0050-0085-HBK	5 X 85	3.346
0050-0090-HBK	5 X 90	3.543
0050-0095-HBK	5 X 95	3.740
0050-00100-HBK	5 X 100	3.936
0050-00105-HBK	5 X 105	4.133
0050-00110-HBK	5 X 110	4.330
0050-00115-HBK	5 X 115	4.527

Acabados: Zincado (HBT) y Natural Aceitado (HBK)

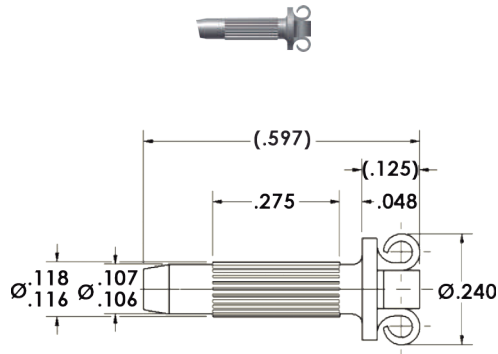


Remaches para Tacón

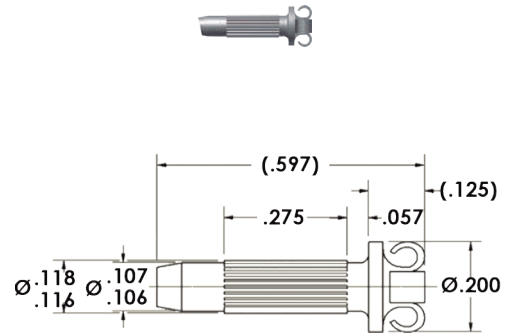


Remaches para Tacón

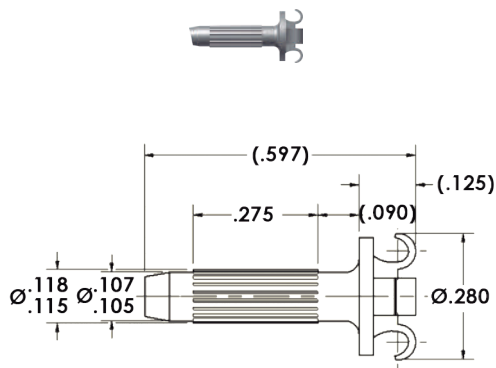
CA108I4764-7644



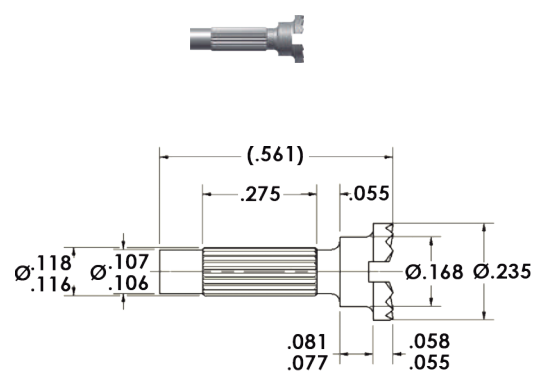
CA10804364-7518



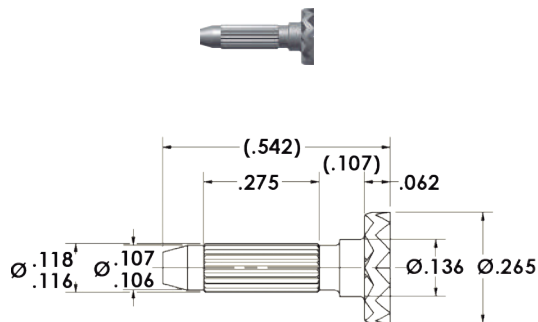
CA10801116-8215



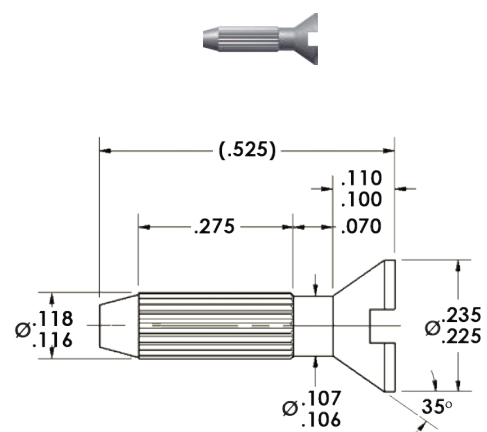
EA10703164-7387



EA10703164-6513



MA10802764-3736



Escala 1:1

Unidad: Pulg.

Remaches para Tacón

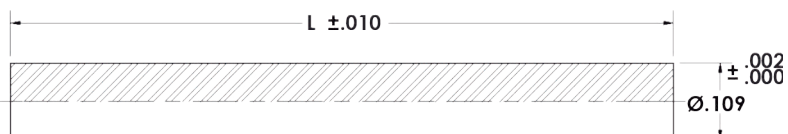
CLAVE	DESCRIPCION
CA108I4764-7644	Cabeza flor de 0.240"
CA108I4764-8034	Cabeza flor de 0.240"
CA10804364-7518	Cabeza flor de 0.200"
CA10804364-8035	Cabeza flor de 0.200"
EA10703164-6513	Cabeza estriada de 0.265"
EA10703164-7387	Cabeza estriada ranurada de 0.235"
MA10800616-4496	Cabeza combinada con ranura de 0.230"
MA10802764-3736	Cabeza plana con ranura de 0.230"
MA10802764-4004	Cabeza de cruz de 0.220"
CA10801116-8215	Cabeza Flor de 0.280"



Alma para Refuerzo de Tacón



CLAVE	L(MM)
INS4-0060-HBK	45
INS4-0065-HBK	50
INS4-0070-HBK	55
INS4-0075-HBK	60
INS4-0080-HBK	65
INS4-0085-HBK	70
INS4-0090-HBK	75
INS4-0095-HBK	80
INS4-0100-HBK	85





Postes de Aluminio

6mm

9mm

12mm

15mm

19mm

25mm



31mm

38mm

44mm

50mm

57mm

63mm



Escala 1:1

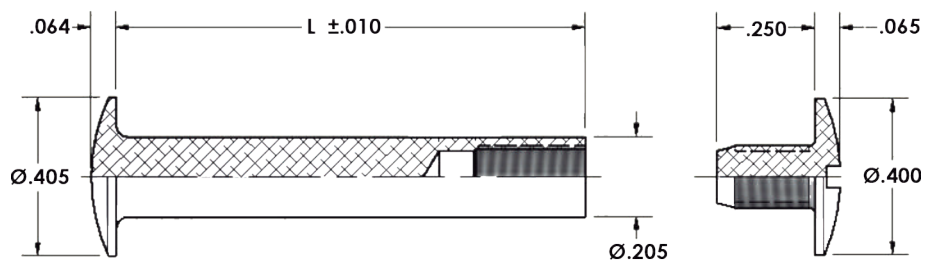
Postes de Aluminio

75mm

89mm

100mm

CLAVE	L(")
POSTES-006	0.250"
POSTES-009	0.375"
POSTES-012	0.500"
POSTES-015	0.625"
POSTES-019	0.750"
POSTES-025	1.000"
POSTES-031	1.250"
POSTES-038	1.500"
POSTES-044	1.750"
POSTES-050	2.000"
POSTES-057	2.250"
POSTES-063	2.500"
POSTES-075	3.000"
POSTES-089	3.500"
POSTES-100	4.000"



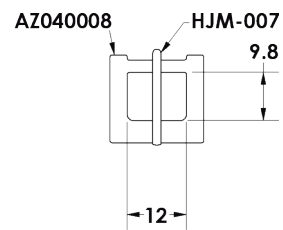
Escala 1:1



Hebillas

Hebilla de Zamak

AZ040008J

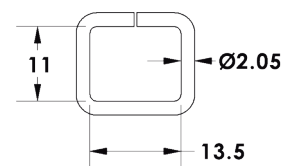


Hebillas de Alambre

CUADRO DE 12mm
ZHJ-0000-12

HEB C/HEBIJON
ZHJ-0001-12

HEB C/RODILLO Y HEBIJO
ZHJ-0011-12

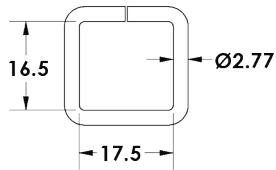




HEB C/RODILLO Y HEBIJO
ZHJ-0011-16

HEB C/HEBIJON
ZHJ-0001-16

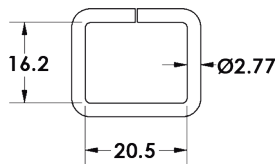
CUADRO DE 16mm
ZHJ-0000-16



HEB C/RODILLO Y HEBIJO
ZHJ-0011-19

HEB C/HEBIJON
ZHJ-0001-19

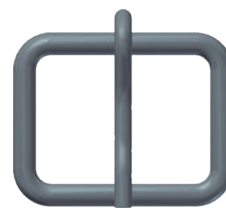
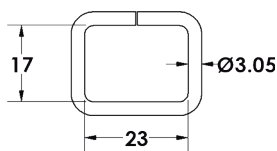
CUADRO DE 19mm
ZHJ-0000-19



HEB C/RODILLO Y HEBIJO
ZHJ-0011-22

HEB C/HEBIJON
ZHJ-0001-22

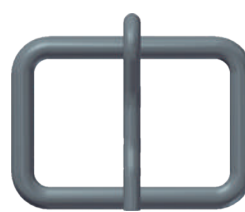
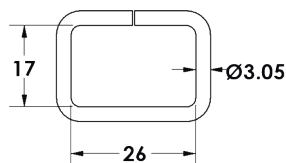
CUADRO DE 22mm
ZHJ-0000-22



HEB C/RODILLO Y HEBIJO
ZHJ-0011-25

HEB C/HEBIJON
ZHJ-0001-25

CUADRO DE 25mm
ZHJ-0000-25

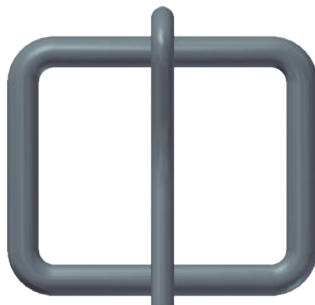


Hebillas

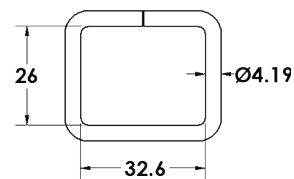
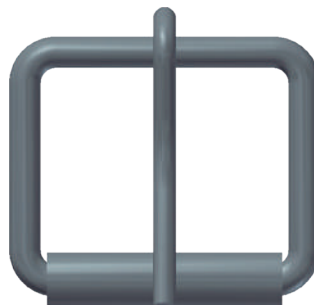
CUADRO DE 32mm
ZHJ-0000-32



HEB C/HEBIJON
ZHJ-0001-32



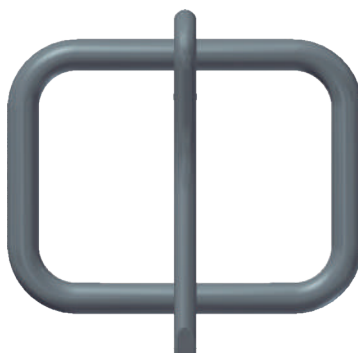
HEB C/RODILLO Y HEBIJO
ZHJ-0011-32



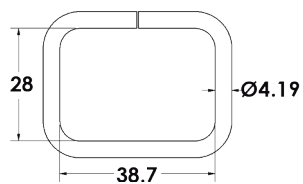
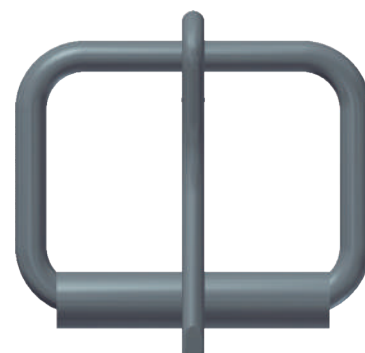
CUADRO DE 38mm
ZHJ-0000-38



HEB C/HEBIJON
ZHJ-0001-38

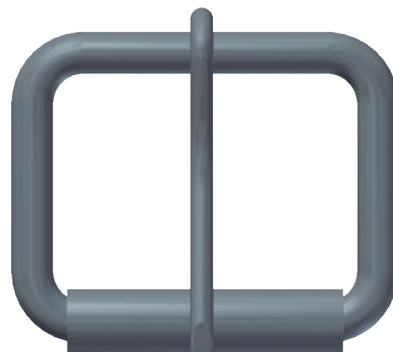
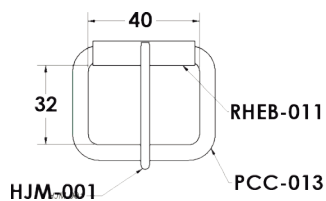


HEB C/RODILLO Y HEBIJO
ZHJ-0011-38

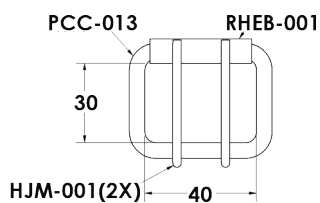




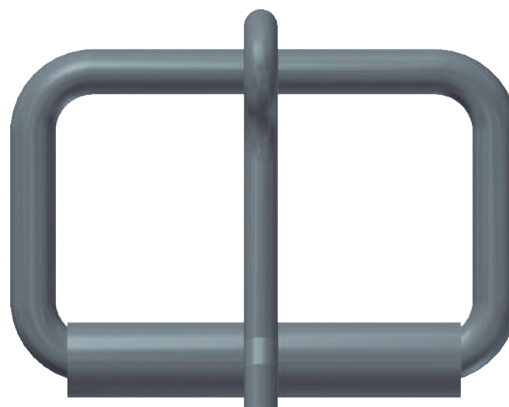
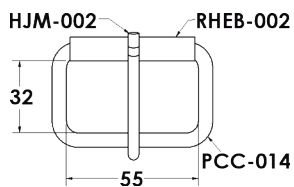
HEB CON 1 HEBIJON
ZHJ-007



HEB CON 2 HEBIJONES
ZHJ-008

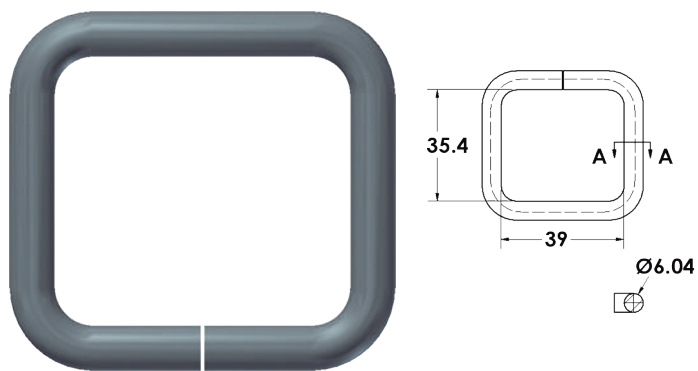


HEB 25X55MM C/1 HEBIJON NI
ZHJ-009

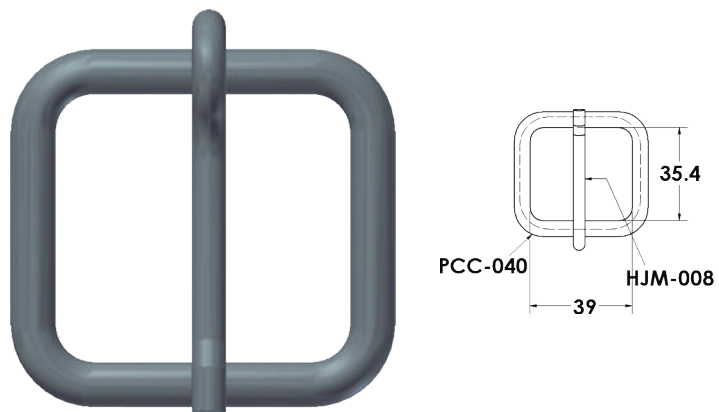


Hebillas

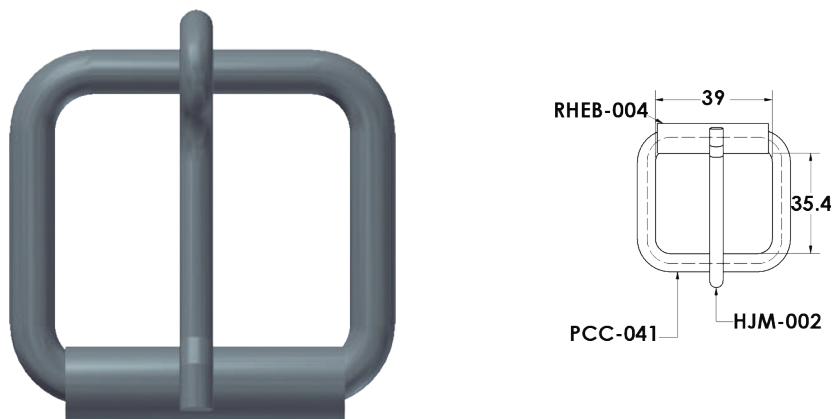
CUADRO SIN RODILLO Y SIN GANCHO 39 mm
PCC-040



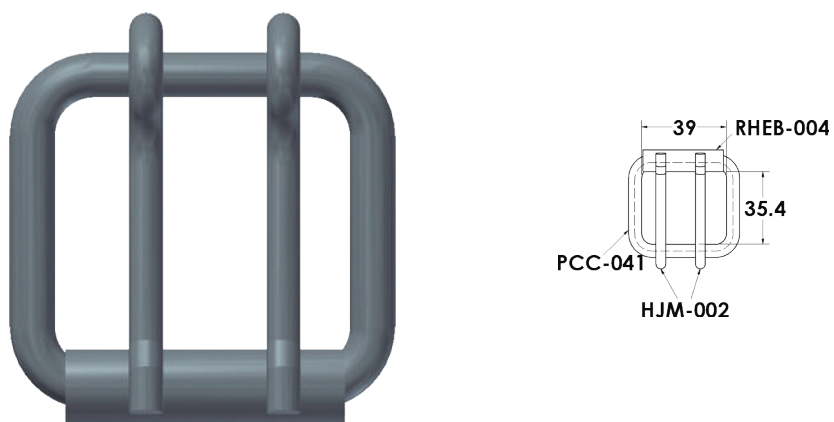
HEB SIN RODILLO Y UN GANCHO 38mm
ZHJ-040



HEB CON RODILLO Y UN GANCHO 38mm
ZHJ-041



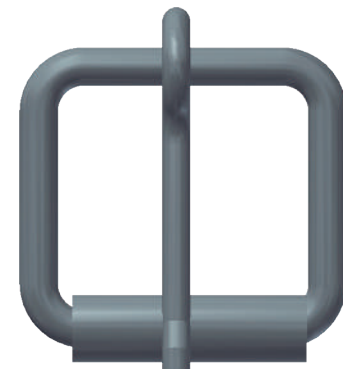
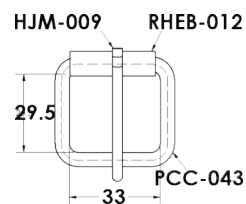
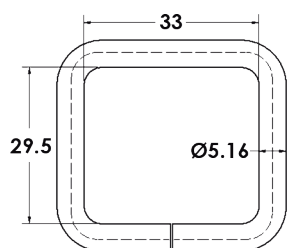
HEB CON RODILLO Y DOS GANCHOS 38mm
ZHJ-042



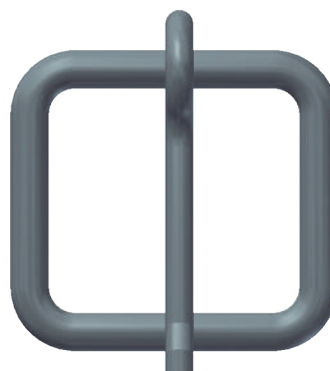
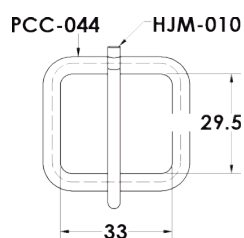


CUADRO SIN RODILLO Y SIN GANCHO 32mm
PCC-044

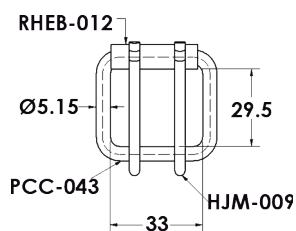
HEB CON RODILLO Y UN GANCHO 32mm
ZHJ-044



HEB SIN RODILLO Y UN GANCHO 32mm
ZHJ-045

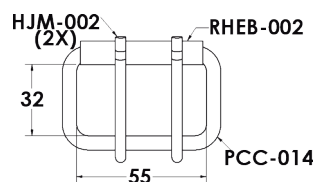
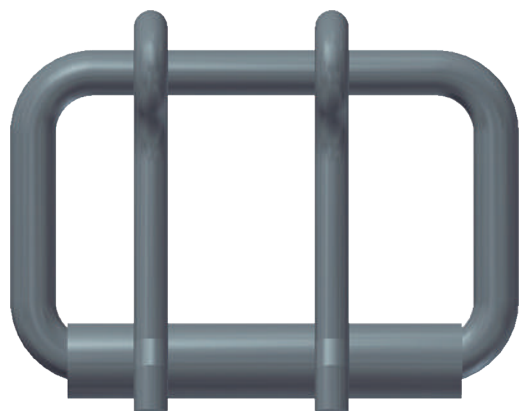


HEB CON RODILLO Y DOS GANCHOS 32mm
ZHJ-046

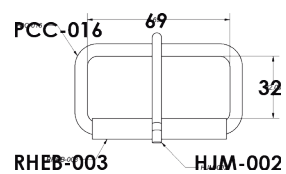
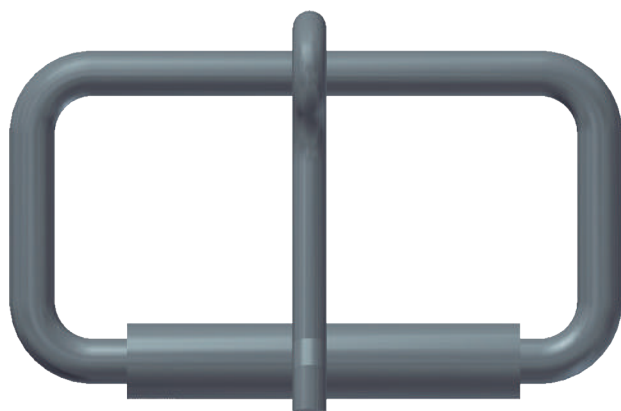


Hebillas

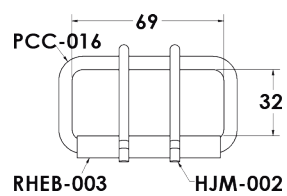
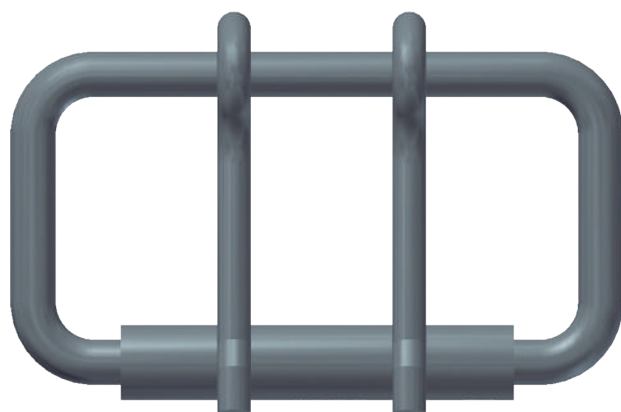
HEB 55X32X6.04 DOBLE
ZHJ-010



HEB 69 X 32 X 6.04
ZHJ-011

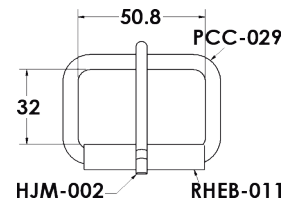
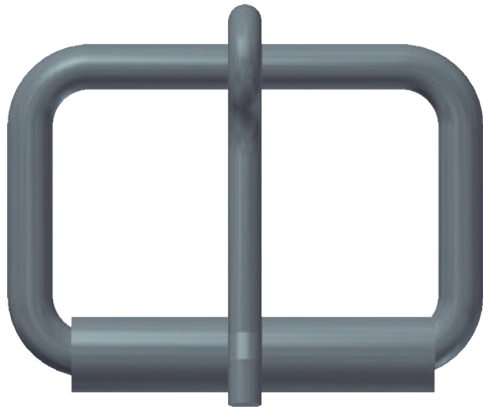


HEB 69 X 32 X 6.04 DOBLE
ZHJ-012



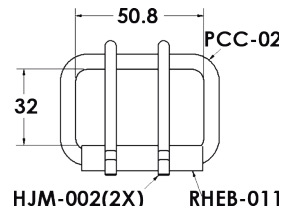
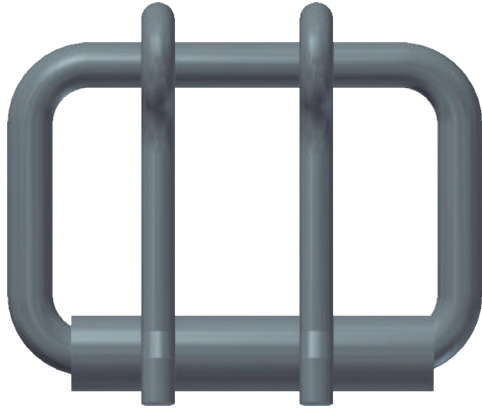


HEB 50.8 X 32 X 6.04
ZHJ-028

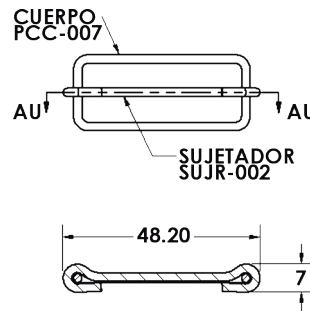


Hebillas

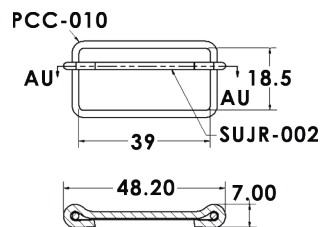
HEB 50.8 X 32 X 6.04 DOBLE HEBIJON
ZHJ-029



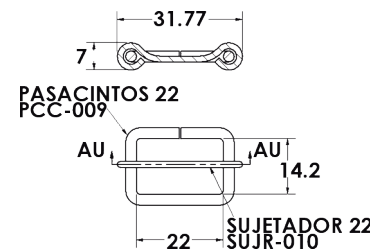
PASAC.C/SUJ. 38mm
PCJ-001



PASAC.C/SUJ. 22mm
PCJ-003



PASAC.C/SUJ. 38mm
PCJ-004





HEB GRANDE P/OVEROL
ZHJ-001

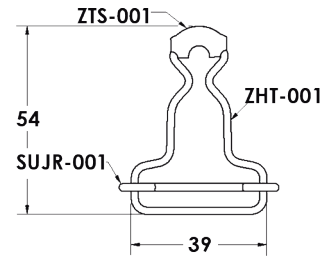
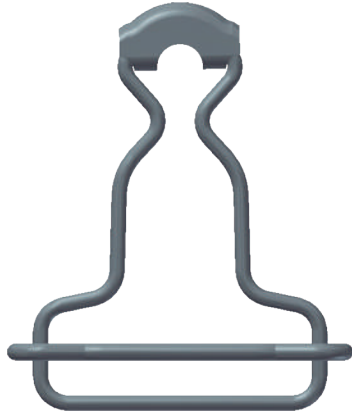


TABLA DE ACABADOS



Tabla de Acabados



Cobre Brillante



Cobre Viejo



Cobre Plata



Cobre Niquel



Cobre Claro



Cobre Negro Plata



Estañado Pulido



Estañado Cobre Viejo



Estañado Mate



Latonado Viejo



Latonado Brillante



Latonado Mate



Latonado Claro



Latonado Claro Mate



Latonado Plata



Latón Brillante



Latón Viejo



Latón Cobre



Latón Congelado



Latón Mate



Latón Niquel



Latón Plata



Niquel Viejo



Niquel Mate



Niquel Humo



Niquel Negro



Niquel Brillante



Niquel Congelado



Zincado Congelado



Zincado Brillante



Zincado Negro



Zincado Viejo



Plata Vieja



Pintado Electrostatico



Pintado en Barril



Pintado en Bajo Relieve



Pintura Moteado Irregular



Pintado Líneas Irregulares



Gun Metal



Pavonado



Plata Vieja Arenada



GUÍA DE APLICACIONES

Material	Calzado Caballero	Calzado Dama	Botas	Sandalias	Tenis	Textil Ropa	Bolsas Mochilas	Cinturones Collares Peiro Sombreros	Lonas	Papeleería
Ojillos Miniatura	X	X	X		X		X			X
Ojillos de Lona			X			X	X	X	X	
Ojillos	X	X			X	X	X	X		
Argollas, Medias Argollas y Eslabones				X			X	X		
Ganchos y Triangulos Mineros			X	X				X		
Estoperoles y adornos	X	X	X	X	X	X	X	X		
Picos de zamak	X	X	X			X	X	X		
Postes de Aluminio								X		X
Broches de presión				X		X	X	X		
Remaches rápidos	X	X		X		X	X	X		
Remaches bifurcados	X	X								
Remaches semitubulares	X	X	X	X			X	X		
Refuerzo p/tacón		X	X							
Hebillas	X	X	X	X	X	X	X	X		

Manejamos materiales como: Acero, Latón, Aluminio y Zamak

Nota: Los Materiales y Dimensiones mencionados son solo Referencia, si requiere de mayor información favor de ponerse en contacto con su Representante de Ventas.

GUÍA DE COLORES





Pintados:

- *Pintura de Barril.
- *Se pinta toda la pieza.
- *Semibrillante.
- *Excelente resistencia a la corrosión.

Esmaltados:

- *Pintura Electrostatica.
- *Se pinta solo la vista.
- *Brillante.
- *Menor resistencia a la corrosión que la pintura de barril.



Nota: Para mayor información de colores, favor de comunicarse con su representante de ventas.

INDUX en México y en el Mundo



Establecida en la ciudad de México, INDUX celebra más de 55 años de innovación y fabricación de una completa gama de productos en fijación. En 1964 INDUX adquirió sus primeras prensas tras formar una alianza con Stocko, empresa líder en fabricación de productos de lámina y con esto comenzó con la manufactura de piezas troqueladas. Combinando el conocimiento de Stocko y la experiencia de INDUX, esta alianza se convirtió rápidamente en un proveedor completo para la industria textil y de calzado. Posteriormente se integraron como valor agregado el tratamiento térmico y los acabados especiales. Durante este mismo periodo debido a la demanda y constantes cambios en la industria de la moda, INDUX buscó consolidar su posición en la industria textil introduciendo una serie de mejoras que culminaron con el lanzamiento de Stilia en 2011, agregando nuevos procesos como la inyección de Zamak.

A través de medio siglo de compromiso acompañado de empresas líderes a nivel global, INDUX se ha convertido en una empresa estratégica para brindar diversas soluciones en fijación abarcando diferentes mercados como el Industrial, el de Ferretería y el del Calzado. Con el 100% de sus operaciones en México, contemplando desde el diseño, fabricación y acabado; INDUX no sólo provee al mercado nacional, sino también exporta al Norte, Centroamérica y Europa.

Centros de Distribución



MÉXICO (Planta)

Laminadora 37, Bellavista
Tacubaya, México D.F. 01140.
Teléfono: +52 (55) 2282 9330
Lada 800: 01800-00-INDUX (46389)
E-mail: ventas@indux.mx

MONTERREY

16 de Septiembre No. 310 Poniente, Independencia, 64720 Monterrey, N.L.
Teléfono: +52 (81) 8289 6330 al 32
Fax: +52 (81) 8289 6333
Lada 800: 01800-00-INDUX (46389)
E-mail: induxmt@indux.com.mx

QUERÉTARO

Fracc. Agro Industrial La Cruz Lote 11, 76249 El Marques, Qro.
Teléfono: +52 (442) 153 9330 al 39
Fax: +52 (442) 277 5093 / 277 5002
Lada 800: 01800-00-INDUX (46389)
E-mail: induxqro@indux.com.mx

GUADALAJARA

Calle 2 (Francisco de Orellana) No. 2023-A, Zona Industrial 04490 Guadalajara, Jal.
Teléfonos: +52 (33) 3811 5060/3560 6330
Fax: +52 (33) 3811 5520
Lada 800: 01800-00-INDUX (46389)
E-mail: induxjal@indux.com.mx

PUEBLA

Av. Paseo de las Fuentes No. 13-A, Arboledas de Guadalupe, 72260 Puebla, Pue.
Teléfono: +52 (222) 372 9330 al 32
Fax: +52 (222) 372 9333
Lada 800: 01800-00-INDUX (46389)
E-mail: induxpue@indux.com.mx

LEÓN

Calle Curtidor No. 101, Fracc. Julián de Obregón, 37290 León, Gto.
Teléfono: +52 (477) 740 9330 al 32
Fax: +52 (477) 740 9333
Lada 800: 01800-00-INDUX (46389)
E-mail: induxgto@indux.com.mx

CIUDAD JUÁREZ

Lada 800: 01800-00-INDUX (46389)
E-mail: induxcdj@indux.com.mx

MÉRIDA

Calle 52 No.436-C por 43 y 45 Centro 9700 Mérida Yucatán
Teléfono: +52 (999) 923 15 24
Lada 800: 01800-00-INDUX (46389)
E-mail: induxmer@indux.com.mx

NEW YORK

P.O. Box 281
Port Washington, NY 11050
Teléfono: (516) 869 4913
Lada 800: (516) 869 4914
E-mail: brendace@drivepinrivets.com
Contact: Bill Rendace

CHICAGO

Glen Ellyn IL 60137
Teléfono: (630) 880 0160
E-mail: jkaslewicz@indux.us.com
Contact: Joel Kaslewicz

